

# JOHN AUSTIN *Ltd*

## SPRAYING

### JCB Fast Trac with Amazone UF Mounted Sprayer and Front Tank - 18M Boom

This spray unit is highly efficient with large capacity tanks holding up to 2800L and is well suited to all spraying applications. It is equipped with amazone amatron GPS Spray boom section control and mapping, allowing us to produce a spray map overlaid on a Google image of your farm thus providing accurate spray maps and proof of application. Also equipped with John Deere auto trac and GS2 mapping for precision farming. This tractor can also be setup with crop wheels for cereal and maize crop spraying.



### Isuzu 4X4 Truck with Amazone UG Mounted Sprayer - 18M boom

This 4x4 Truck is well suited to all spraying applications, including Eco N and Less N application. Equipped with the same Amazone GPS Spray boom section control and mapping as the JCB to provide measureable results. This truck is extremely capable in all terrain making it very versatile.



### Multidrive Sprayer - 18M Boom

sprayer is set up with low ground pressure tyres to minimise pasture damage and maintain traction in soft soil conditions. An exceptionally capable machine providing excellent results especially when applying Eco-N in challenging winter conditions. The multi drive's large capacity makes it extremely efficient for spraying large areas of pasture for copping. Also equipped with mapping and variable rate spray controllers. This machine is very versatile.





## 6M Rotowiper

This can be fitted to any tractor and used on all terrains to control thistles and weeds where spraying is not suitable. Great for cleaning up Californian thistles where protection for clover is paramount.

## John Deere Gator with Sprayer - 4M Boom

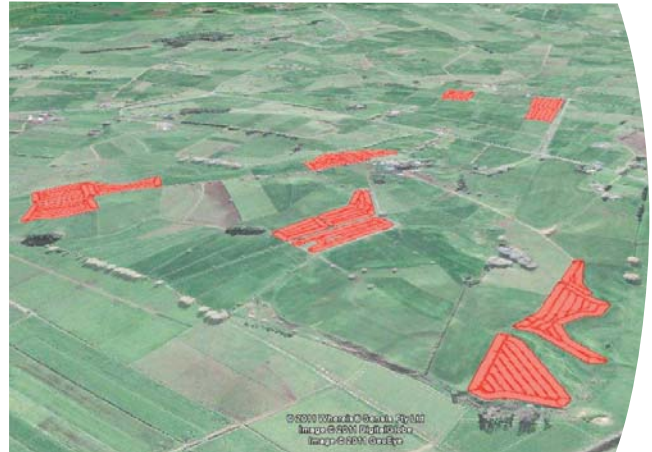
This is great for small jobs on lifestyle blocks or attacking Gorse in challenging conditions. Equipped with a 4M boom and a Handgun. The Gator is very manoeuvrable on steep ground due to its low ground pressure which also makes it suitable for sports fields and lifestyle blocks. The Gator is also equipped with John Deere Greenstar Mapping.

## Chemicals

John Austin Ltd can also supply all your chemicals required to do the job. This eliminates any part containers left on farm - pay only for what you use.

## Spray Mapping

Our spray rigs are equipped with Amatron GPS mapping which provides super accurate coverage maps. Below is an example of a coverage map produced by our new spray truck layered over a google earth image. These are produced every time the spray truck enters a paddock on your farm.



**JOHN AUSTIN** Ltd  
AGRICULTURAL CONTRACTOR - MAIZE SPECIALIST

348 Te Mawhai Road  
R.D.5  
Te Awamutu  
New Zealand

Phone 07 872 0000  
Fax 07 872 0001  
Email [john.austin@johnaustintltd.co.nz](mailto:john.austin@johnaustintltd.co.nz)  
[www.johnaustintltd.co.nz](http://www.johnaustintltd.co.nz)